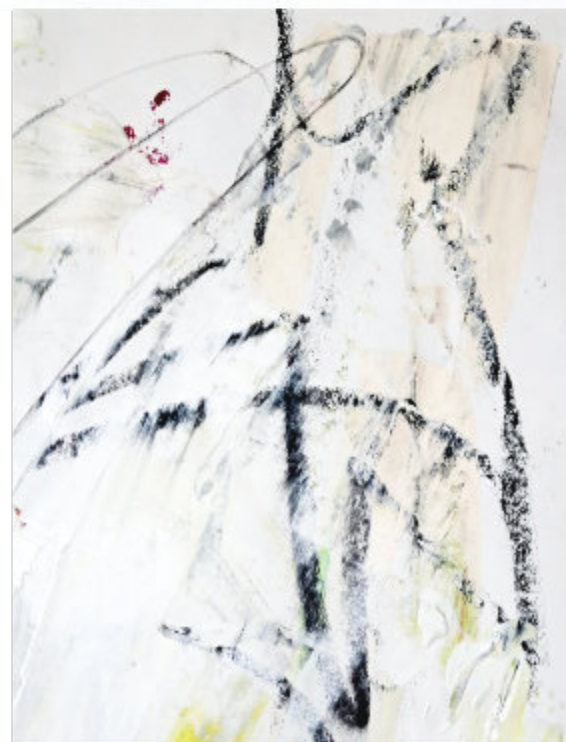
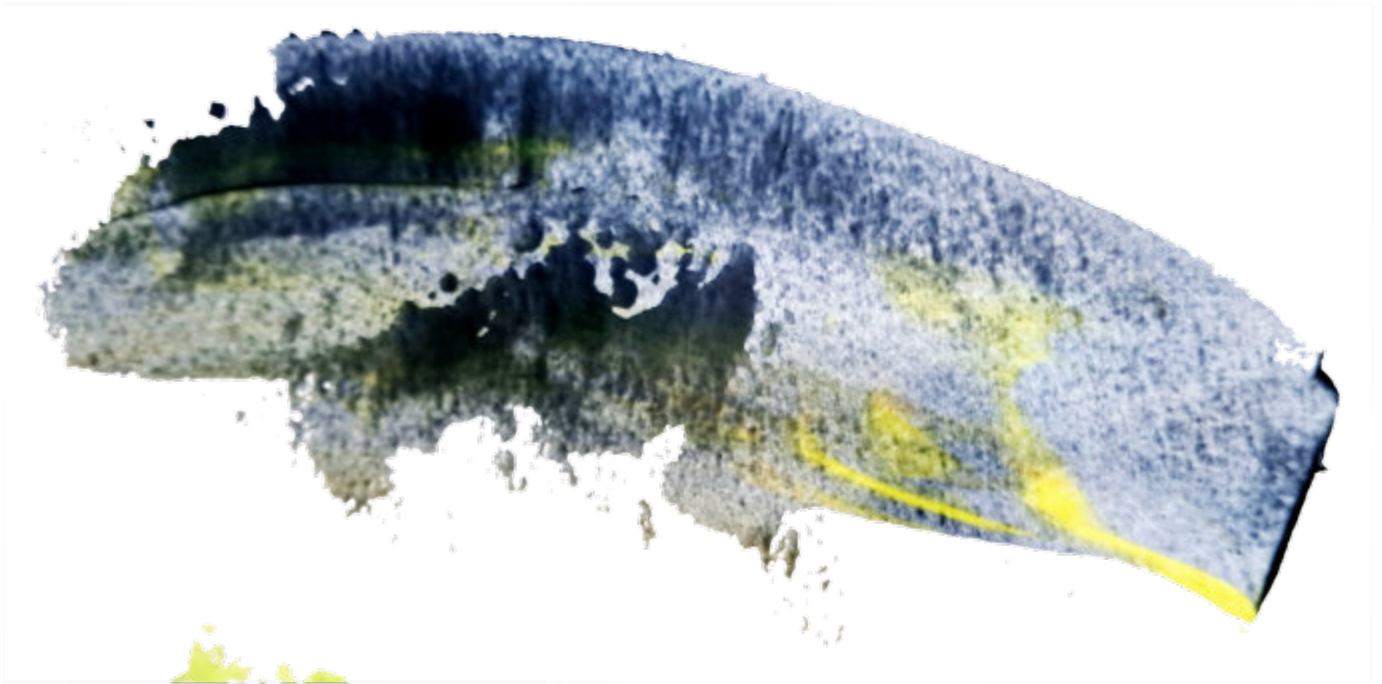
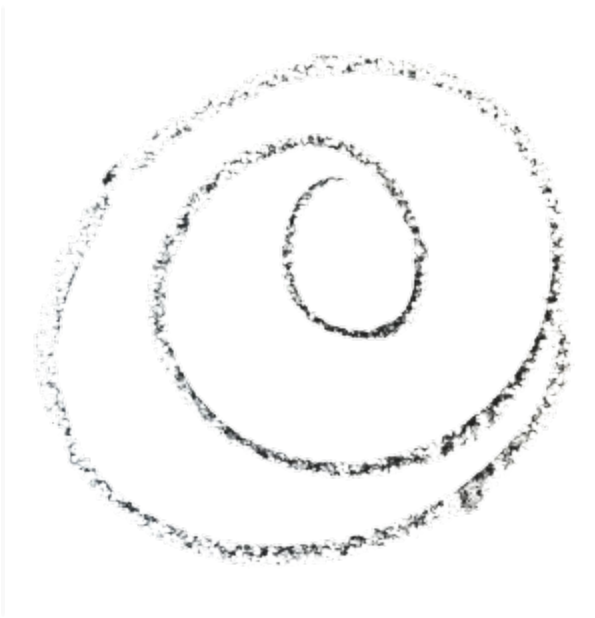


# Studio Marks

These marks came out of my studio — paint-off sheets, blotter papers, happy accidents from real work in progress. Print them. Cut them up. Cover them up. Use them until they're gone. That's what they're for.







© 2026 Monette Satterfield / Shiny Designs

For your personal creative use.

Not for resale or commercial reproduction. [shinydesigns.com](http://shinydesigns.com)

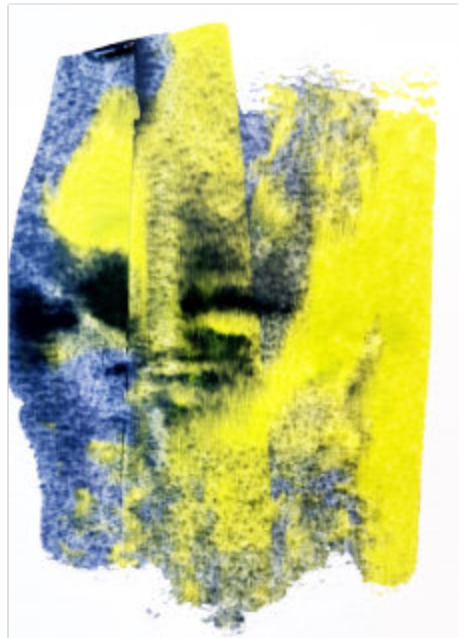
Print on whatever paper you have.

Use as collage backgrounds, cutting material, layering elements, or journal pages.

There's no wrong way to use them.

Take what belongs to you.





From Shiny Designs • Wild Creation  
A gift for Kindle readers of Take What  
Belongs to You: Wild Creativity  
shinydesigns.com

